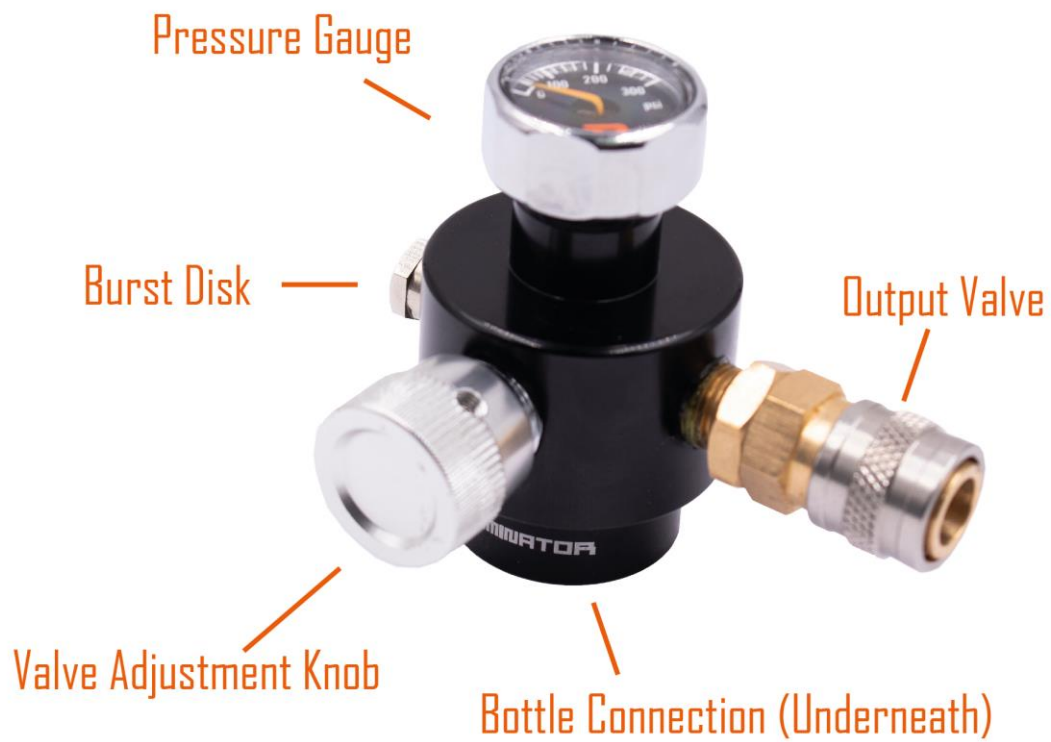


OPERATING GUIDE

DS-U00110

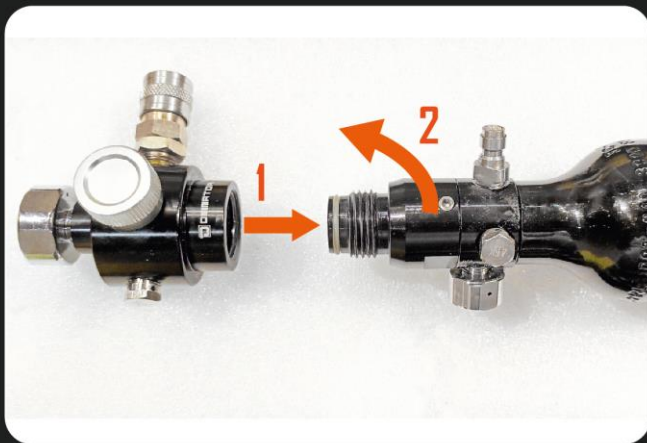
Micro HPA Air Regulator



CONNECTION

1. Before connecting the regulator to the bottle(s), make sure that the VALVE ADJUSTMENT KNOB is slightly tightened anti-clockwise.

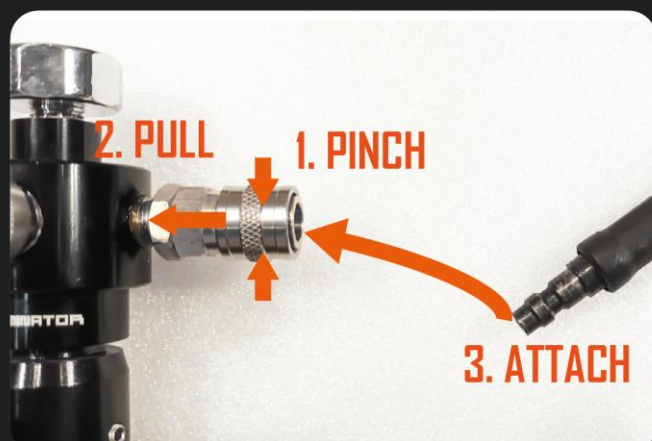
[CAUTION: DO NOT Tighten the VALVE ADJUSTMENT KNOB **FULLY**, as the PRESSURE GAUGE needle may break due to immense air pressure.]



2. Attach the regulator to the HPA bottle, then screw it in **CLOCKWISE**, until it is tightly sealed.

NOTE: DO NOT OVERSCREW OR THE THREADING MAYBE DAMAGED.

3. Pinch and pull the QD ring on the OUTPUT VALVE, then attach the connecting hose to the OUTPUT VALVE.



ADJUSTMENT

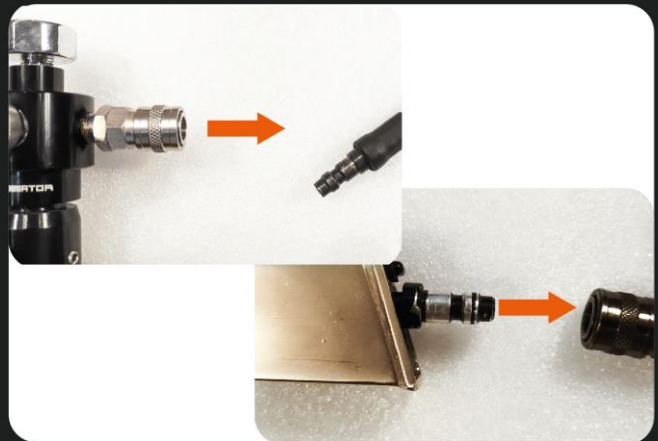
Tighten the VALVE ADJUSTMENT KNOB anti-clockwise to increase PSI

Make sure to tighten slowly to reach desired PSI. If you went over-board, disconnect and re-adjust.



DISCONNECTION

You can disconnect the hose from the OUTPUT VALVE side or the Tap / Engine side. Just pinch and pull in the QD ring to release the hose. (CONNECTION STEP 3 in reverse)



TIPS AND TRICKS

1. Adjust the valve when all items are plugged in properly. (Properly as in the Magazine, Hose Line and the Regulator connected to the Air Bottle.)
2. If everything is plugged in properly, the PSI on the regulator should remain the same even when the Magazine / Hose Line is disconnected.
3. Any PSI adjustments before plugging in properly will not stay after plugging.